



**CRAPPIE FISHING
TIPS/TECHNIQUES FOR THE
WEEKEND ANGLER**

BY GREG AND LUKE HUMPHREY

The logo for B'n'T is the word "B'n'T" written in a red, stylized, cursive font. The letters are thick and have a slightly distressed or hand-painted appearance. The logo is set against a white rectangular background.





2014 RECAP



- **#1 QUESTION OF 2014???**
 - **HOW DO YOU KNOW WHERE TO START OR GO?**
- **KEY WATER TEMPS FOR EACH SEASON**
- **PRIME FEEDING TEMPS ARE 40-45 DEGREES(NON SPAWN PERIODS)**
- **CORRELATION BETWEEN SEASONS AND TECHNIQUES USED**
- **TIME IS OF THE ESSENCE**
 - **MOST CRAPPIE ANGLERS HAVE TO BALANCE JOBS AND FAMILIES WITH FISHING TIME**
 - **FOCUS ON KEY ASPECTS TO MAXIMIZE YOUR TIME ON THE WATER**

ORGANIZATION AND PLANNING

The following slides will cover the 3 main topics we feel are most important for the weekend angler. Preparation off the water is a vital key to success on the water.

1. ORGANIZE YOUR BAITS FOR EVERY CONDITION
2. WHAT TECHNIQUE TO USE FOR EACH CONDITION

- SPIDER RIG
- SINGLE POLE JIG
- CORKING

3. TOOLS TO USE OFF THE WATER

- WEATHER.COM
- FISHING REPORTS
- MAPS
- ELECTRONICS
- GOOGLE EARTH





BAITS



1. ORGANIZING BAITS FOR CONDITIONS
2. MATCHING BAITS TO WATER CLARITY AND LIGHT CONDITIONS



- LOW LIGHT (EARLY MORNING AND CLOUDY DAYS) MO GLO BAITS
- CLEAR WATER (DIFFERENT FORMS OF BLUE AND WHITE TO MATCH BAITFISH)
- MUDDY (BAITS WITH BLACK IN THEM)
- STAINED (DARK COLORED BAITS)
- DOWNSIZE BAITS DUE TO PRESSURE
- AGGRESSIVE BITE BEST BET IS TO MATCH BAIT COLOR
- SLOW BITE GO FOR THE REACTION STRIKE, FLASH, BOLD COLORS





TECHNIQUES



- **SPIDER RIGGING**

- B'n'M TROLLING RODS
- B'n'M BGJP SERIES
- COVER WATER WITH NUMEROUS BAITS
 - » CAPPS/COLEMAN RIGS
 - » DOUBLE JIG RIGS



- **SINGLE POLE JIGGING**

- SAM HEATON SUPER SENSITIVE
 - ULTRALITE SERIES
 - BGJP SERIES
 - SLIP CORKING
- (PERSONAL PREFERENCE)



TOOLS TO USE OFF THE WATER

WHERE TO START?

- LOOK FOR AREAS FIRST NOT STRUCTURE
- WEATHER.COM
 - CHART WIND DIRECTION AND SPEED
 - RAIN TOTALS
 - HOURS OF SUNLIGHT
- FISHING REPORTS
 - PULL OUT THE VALUABLE INFO
 - WATER TEMPS, WATER CLARITY AND DEPTH
 - TAKE REPORTS WITH A GRAIN OF SALT



TOOLS TO USE OFF THE WATER CONT.

- **MAPS (PAPER OR ELECTRONIC)**
 - SPORTSMANS CONNECTION, NAVIONICS
- **GOOGLE EARTH**
 - AFTER YOU HAVE COMPILED DATA NOW YOU CAN RESEARCH AREAS
 - AVOID SPOT HOPPING AS MUCH AS POSSIBLE
 - NARROW YOUR WATER
 - START AT THE MOUTHS OF RIVERS DITCHES OR CREEKS AND LOOK FOR A MIDPOINT, MARK WAYPOINTS AND TRACKS
 - HIGHWAY TRAFFIC VS SIDE ROAD TRAFFIC...FISH USE CHANNELS
 - ONCE YOU FIND FISH THERE ARE ALWAYS MORE FISH IN THE AREA.....PICK IT A PART!
- **ELECTRONICS**
 - NOW THAT YOU HAVE AN AREA, USE SIDE AND DOWN IMAGING TO LOCATE FISH

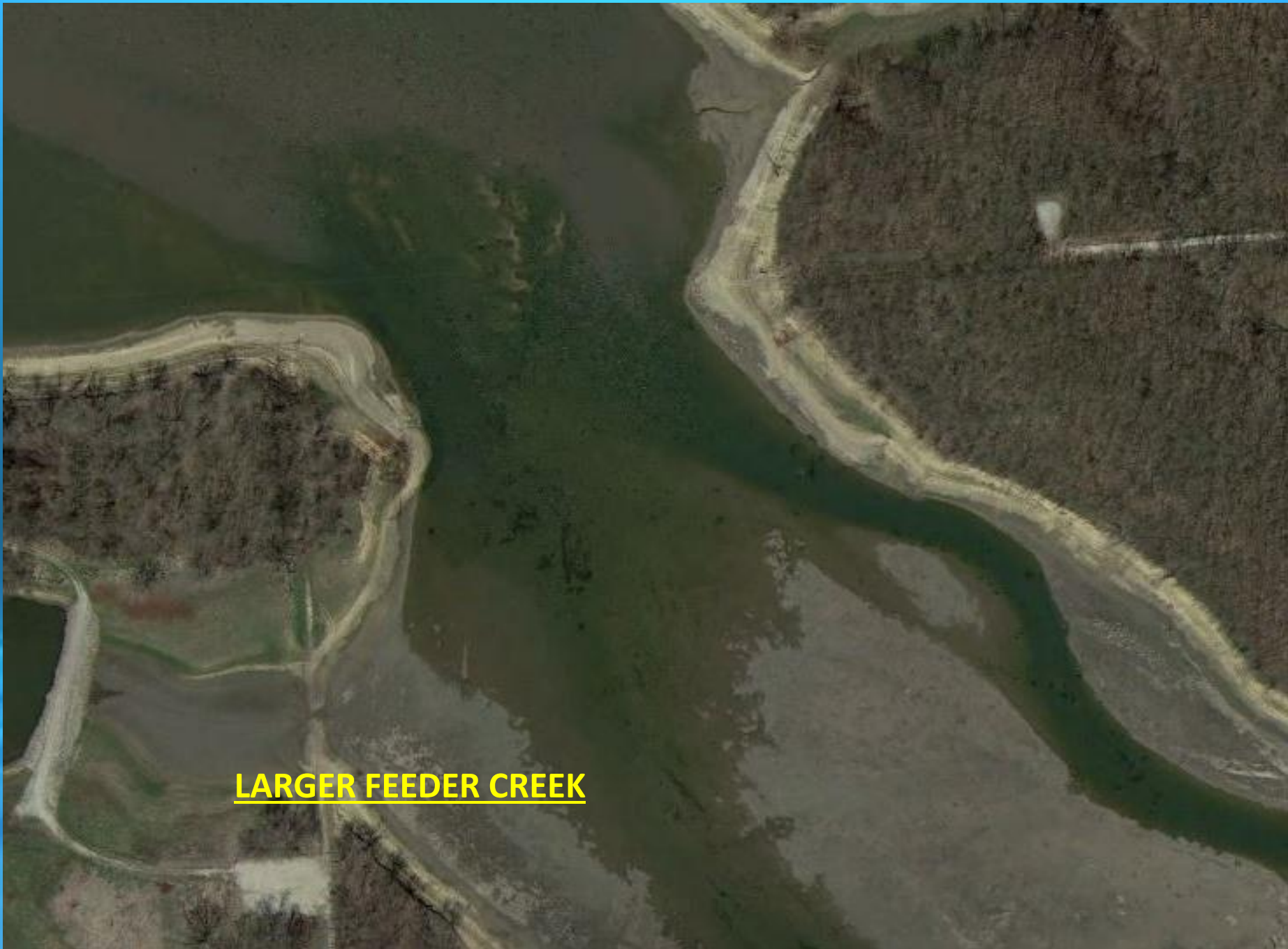


An aerial photograph showing a dark, muddy cove. A narrow, light-colored ditch runs diagonally from the top left towards the bottom right, bisecting the cove. The left side of the cove is bordered by a dense, green forest. The water in the cove is dark and still, with some small, light-colored patches visible. The overall scene is a natural, somewhat desolate landscape.

DITCH RUNNING THROUGH A COVE



COVE WITHOUT A DRAIN



LARGER FEEDER CREEK

An aerial photograph showing a river delta. A central distributary channel flows from the top center towards the bottom right. Numerous smaller, branching channels (creeks) are visible on both sides of the main channel, illustrating the process of small creeks coming together. The terrain is brown and appears to be a mix of water and land.

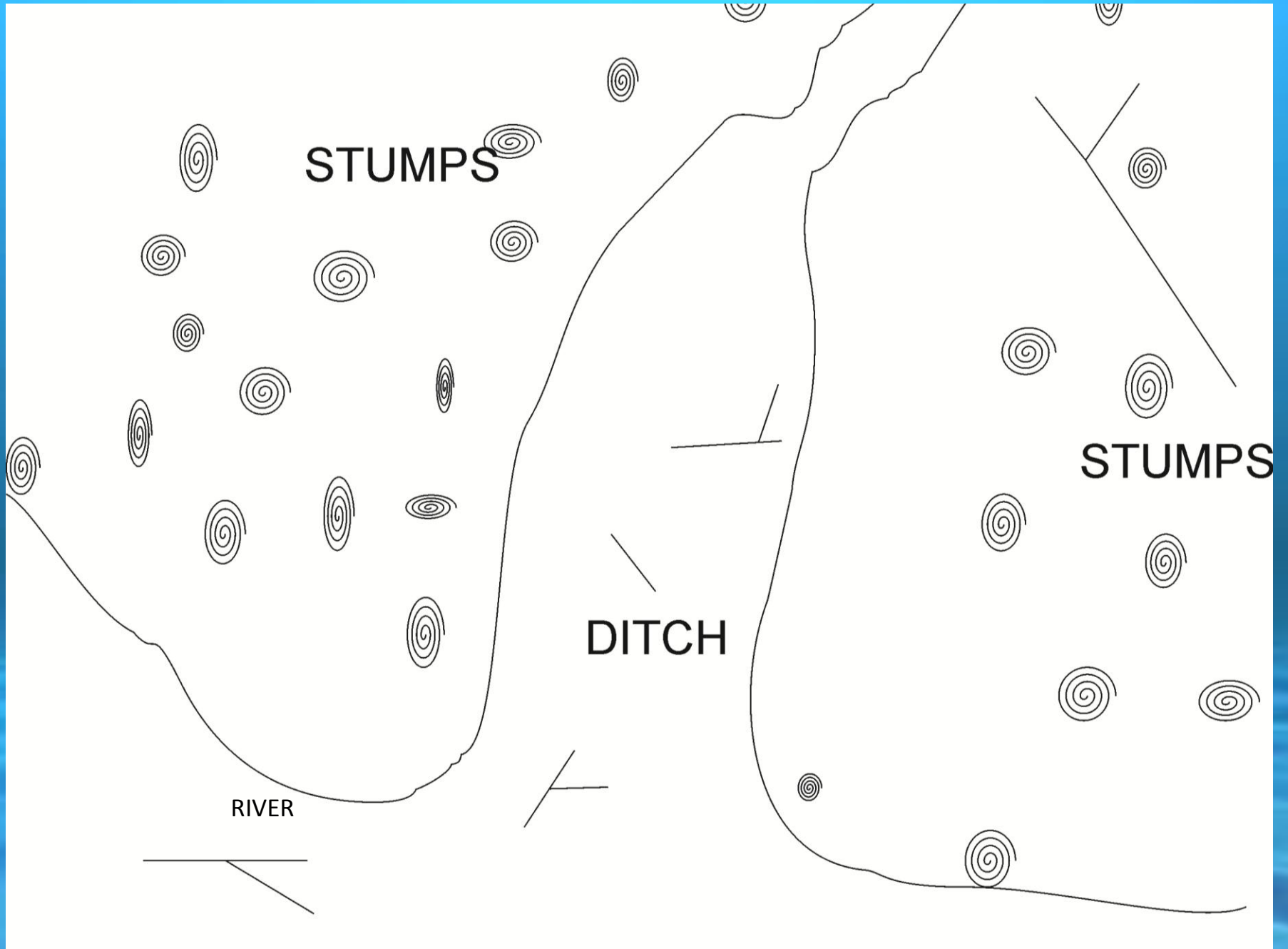
SMALL CREEKS COMING TOGETHER

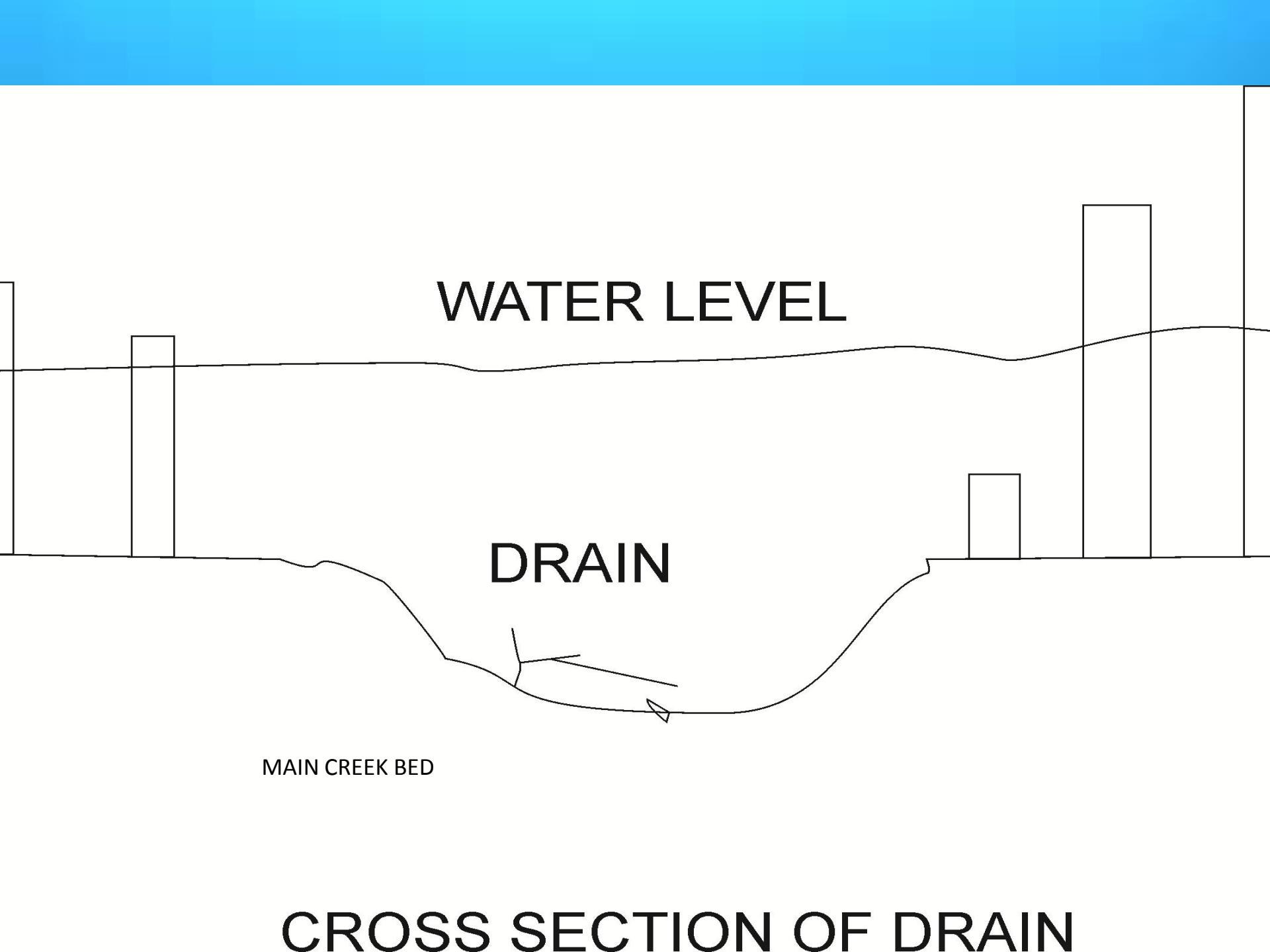


SMALL DRAIN WITH A 2-3 FT ELEVATION DIFFERENCE
LEADING TO CREEK CHANNEL



UNDER WATER STRUCTURE IN DRAIN LEADING TO CREEK CHANNEL





WATER LEVEL

DRAIN

MAIN CREEK BED

CROSS SECTION OF DRAIN

