

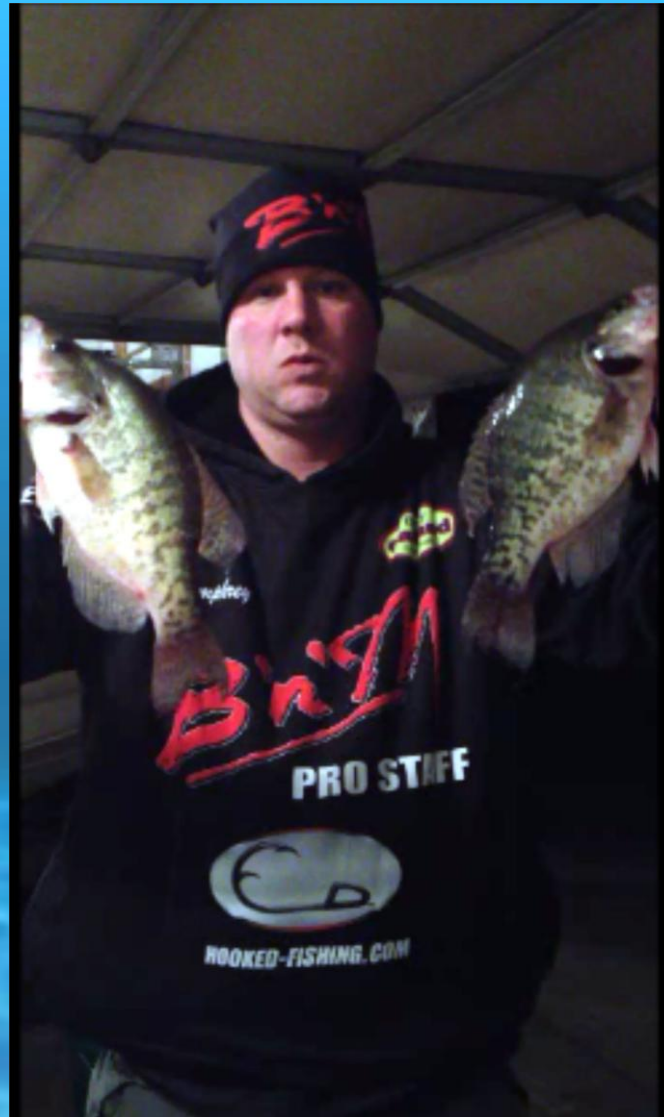
ANGLERS OF THE YEAR

SPRINGFIELD



CRAPPIE CLUB

2014



LAKE EVERGREEN DEC. 27, 2014



CRAPPIE BASICS 2014



SEASONS

- SPRING
 - SUMMER
 - FALL
 - WINTER
-
- DIRECT CORRELATION BETWEEN SEASONS AND WATER TEMPS



3 T'S TO HELP YOU CATCH MORE CRAPPIE

- TEMPS
- TACTICS
- TACKLE



- ALIGNING ALL THREE OF THESE ASPECTS WILL IMPROVE YOUR CHANCES OF CATCHING MORE CRAPPIE.





H₂O TEMPS

- THERE IS A DIRECT CORRELATION BETWEEN SPRING AND FALL WATER TEMPS.

a) MOST CRAPPIE FISHERMAN KNOW THAT THE BEST TIME TO CATCH CRAPPIE IS IN THE FALL OF THE YEAR. WATER TEMPS DETERMINE THE LOCATION AND MOOD OF THE FISH. WHAT FEW KNOW IS THAT THIS ALSO HAPPENS EARLY IN THE SPRING.

- SPRING TEMPS  FALL TEMPS

- 38-50 ↑

- 50-38 ↓

- FISH ARE AGGRESIVELY FEEDING AT THESE TEMPS

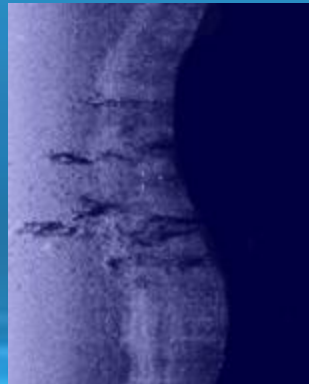
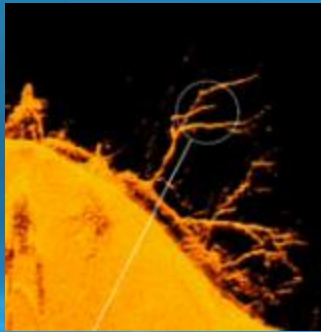


2 WEEKS AFTER ICE OUT

TEMPS HAVE CLIMBED TO AROUND 46. THIS IS AN IDEAL WATER TEMP FOR FINDING FEEDING CRAPPIE.

SPRING H₂O TEMPS KEYPOINTS

- AFTER ICE-OUT – WITH STABLE WARMER AIR TEMPS THAT GRAVITATE INTO THE 50S AND 60S YOU WILL SEE WATER TEMPS RISE FROM 34 TO 38+ DEGREES. CRAPPIE START TO MOVE UP AND IN TO FEED.



- USING YOUR HUMMINBIRD SIDE AND DOWN IMAGING YOU CAN CONCENTRATE ON LOCATIONS LIKE THIS THAT HAVE STRUCTURE IN SEVERAL DEPTHS.





EARLY SPRING TACTICS

- **NO. 1 TECHNIQUE IS THE SPIDER RIG.**
 - INCREASING THE NUMBER OF BAITES IN THE WATER HELPS LOCATE FISH QUICKLY
 - BAITES CAN BE DIFFERENT
 - COLORS
 - MULTIPLE SIZE BAITES
 - DEPTHS
 - MORE BAITES MEANS MORE CHANCES TO CATCH FISH

BAITS



RODS/REELS



THE SPAWN

- ALL TACTICS WILL WORK
 - SPIDER RIGGING WILL LOCATE STAGING FEMALES AND FISH MOVING ON AND OFF THE BEDS
 - SINGLE POLE JIGGING
 - SLIP CORKING ALLOWS YOU TO STAY BACK AND NOT SPOOK SPAWNING FISH
 - FISH WILL SPAWN IN LESS THAN 1 FT. OF WATER



POST SPAWN

- FISH CAN BE CAUGHT IN A VARIETY OF DEPTHS. CRAPPIES SPAWN IN WAVES IN DIFFERENT AREAS OF THE LAKE.
- MALES ARE PROTECTING, FEMALES ARE FEEDING TO RE-GAIN STRENGTH
- SPIDER RIGGING, SINGLE POLE, AND CORKING WILL ALL WORK.



EARLY SUMMMER

- GENERALLY THIS IS WHEN THE BITE SLOWS
- FISH HAVE FED AND ARE MOVING TO DEEPER STRUCTURE TO PREPARE FOR THE SUMMER WATER WARM UP.
- WATER TEMPS APPROACH 80 DEGREES
- NO. 1 TACTIC IS SINGLE POLE JIGGING STRUCTURE, BUT SPIDER RIGGING FLATS WILL SOON COME INTO PLAY



EARLY SUMMER TACTICS AND TACKLE

- TYPICALLY THE SMALLER BAITS WORK DURING THIS PERIOD.
- FISH ARE POSITIONED TIGHT TO STRUCTURE AND THE STRIKEZONE IS SMALL.

BAITS

- CHANGING THE PROFILE OF THE BAIT TO HELP PREVENT SHORT STRIKES CAN HELP INCREASE YOUR FISH CATCH



SUMMER WARM WATER MYTH

- ON THE PREVIOUS SLIDE WE TALKED ABOUT THE FISH MOVING TO DEEPER STRUCTURE WHEN WATER TEMPS WARM UP TO AROUND 80. WHAT A LOT OF ANGLERS DON'T REALIZE IS THAT THE BITE DOES SLOW DOWN FOR A PERIOD OF AROUND A MONTH, BUT GENERALLY SOMETIME IN JULY THERE IS ANOTHER ASPECT THAT COMES INTO PLAY THAT PICKS THE BITE BACK UP.





SHAD HATCH

- WATER TEMPS ARE IN THE 70'S AND 80'S
- THE SHAD SPAWNED AND THE YEARLINGS HAVE HATCHED INTRODUCING AN ABUNDANCE OF FOOD INTO LAKES.
- LOCATION: FIND WIND BLOWN FLATS OR POCKETS THAT ARE HOLDING BAITFISH.
- TACTICS: SPIDER RIGGING, SINGLE POLE JIGGING
- TACKLE: BIG BAITS ARE THE KEY ONCE AGAIN TO FINDING LARGE MORE AGGRESSIVE FISH.

B'n'TH



LATE SUMMMER

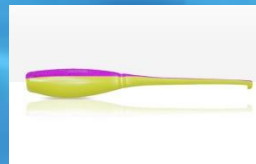


- THE FISH HAVE FED DURING THE SHAD HATCH AND MOVE BACK TO DEEPER WATER. THE BITE IS NON AGGRESSIVE AND THE FISH ARE HOLDING TIGHT TO COVER.
- TACTICS: SINGLE POLE JIGGING WITH A SMALLER PROFILE BAIT. FISH WILL STILL FEED BUT WILL ONLY MOVE 1-2 FEET TO DO SO. GENERALLY LATE AUGUST AND INTO SEPTEMBER.

FALL



- AS THE WATER TEMPS START DROPPING INTO THE 60S AND 50S THE FISH START TO MOVE INTO SHALLOWER WATER. FISH ARE A LITTLE MORE SCATTERED AND THEY ARE LOOKING TO FIND SCHOOLING BAITFISH IN THE 6-12 FT RANGE.
- ONCE TEMPS HOLD IN THE UPPER 40S AND LOWER 50S. FISH CAN BE FOUND IN 6 FT. OR LESS.
- TACTICS; SINGLE POLE JIGGING AND CORKING BOTH WILL WORK. MEDIUM TO LARGE BAITS ARE PREFERRED. STAY BACK FROM STRUCTURE AS FAR AS POSSIBLE. CRAPPIE WILL SPOOK EASILY.





WINTER

- TEMPS IN THE 30S
- FIND AREAS WHERE THE H2O TEMPS WARM THROUGHOUT THE DAY. FISH WILL BECOME MORE ACTIVE AS THE WATER WARMMS THROUGHOUT THE DAY.
- TACTICS; SINGLE POLE JIGGING STRUCTURE WITH MEDIUM TO LARGE BAITs.

RE-CAP

- FINDING THE CORRECT WATER TEMPERATURE TO CORRESPOND WITH THE SEASON IS KEY.
- LOCATING AREAS THAT ARE WARMER IN THE SPRING AND COOLER IN THE FALL WILL HOLD MORE FISH.
- USING THE METHOD AND CORRECT BAIT THAT BEST SUITS THE CONDITIONS.

