



**CRAPPIE FISHING
CENTRAL IL LAKES
ALL YEAR**

BY GREG AND LUKE HUMPHREY

CENTRAL ILLINOIS LAKES

- **DAWSON**
- **EVERGREEN**
- **CLINTON**
- **SHELBYVILLE**

FISHING THE CONDITIONS IN CENTRAL ILLINOIS

- BAIT COLORS AND WHY THEY WORK IN CERTAIN CONDITIONS
- BAIT SIZE
- FISHING TECHNIQUE





BAITS



- **LOW LIGHT (EARLY MORNING AND CLOUDY DAYS) MO GLO BAITS**
- **CLEAR WATER (DIFFERENT FORMS OF BLUE AND WHITE TO MATCH BAITFISH)**
- **MUDDY (BAITS WITH BLACK IN THEM)**
- **STAINED (DARK COLORED BAITS)**



DIRTY STAINED WATER WITH A HEAVY ALGAE BLOOM ON A BRIGHT SUNNY DAY



ECLIPSE BABY SHAD



1ST WEEK OF JANUARY 2016 CLINTON LAKE MUDDY WATER WITH BRIGHT SUNLIGHT





TECHNIQUES



- **SPIDER RIGGING**

- B'n'M TROLLING RODS
- B'n'M BGJP SERIES
- COVER WATER WITH NUMEROUS BAITSA
 - » CAPPS/COLEMAN RIGS
 - » DOUBLE JIG RIGS

- **SINGLE POLE JIGGING**

- SAM HEATON SUPER SENSITIVE
- ULTRALITE SERIES
- BGJP SERIES
 - SLIP CORKING

(PERSONAL PREFERENCE)

PREPPING FOR A TRIP TO A CENTRAL ILLINOIS LAKE USING A PC

- **GOOGLE EARTH**
- **MAPPING**
- **WAYPOINT ORGANIZATION (MY HUMMINBIRD PC)**
- **CHART WIND SPEED AND DIRECTION**
- **FOLLOW TEMPS**
- **ON AVERAGE WE ONLY HAVE 6 HOURS ON THE WATER TO FIND FISH. THESE TECHNIQUES HELP NARROW DOWN AREAS.**

DAWSON LAKE: TYPICAL NORTH TO SOUTH LAKE WITH SHALLOW NORTH END AND DEEPER SOUTH END.

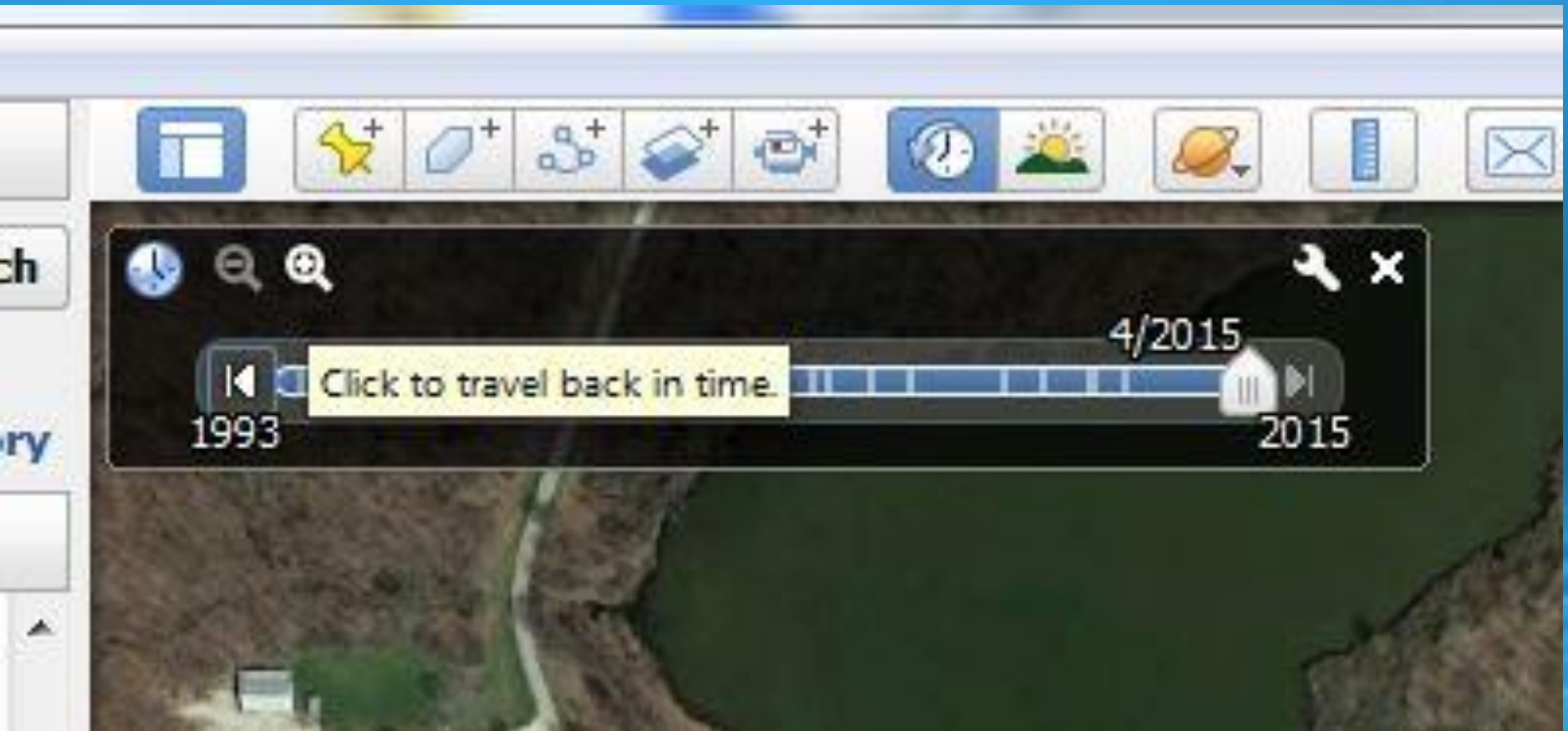


- STUMPS, GRASS, STRUCTURE DEPTH CHANGES
- #1 SPIDER RIG
- 1ST LAKE WE FOUND SUSPENDED FISH IN JULY AND WERE ABLE TO SUCCESSFULLY CATCH THEM.
- ALL OTHER TACTICS APPLY
- ONCE ICE COMES OFF THIS LAKE IS ON FIRE

EVERGREEN CHARACTERISTICS

- RIVER CHANNELS
 - CREEK CHANNELS
 - DITCHES
 - SMALL DRAINS
 - ISLANDS
 - FLATS
-
- OUR MAIN EMPHASIS IS FINDING AREAS NOT JUST STRUCTURE

USING GOOGLE EARTH

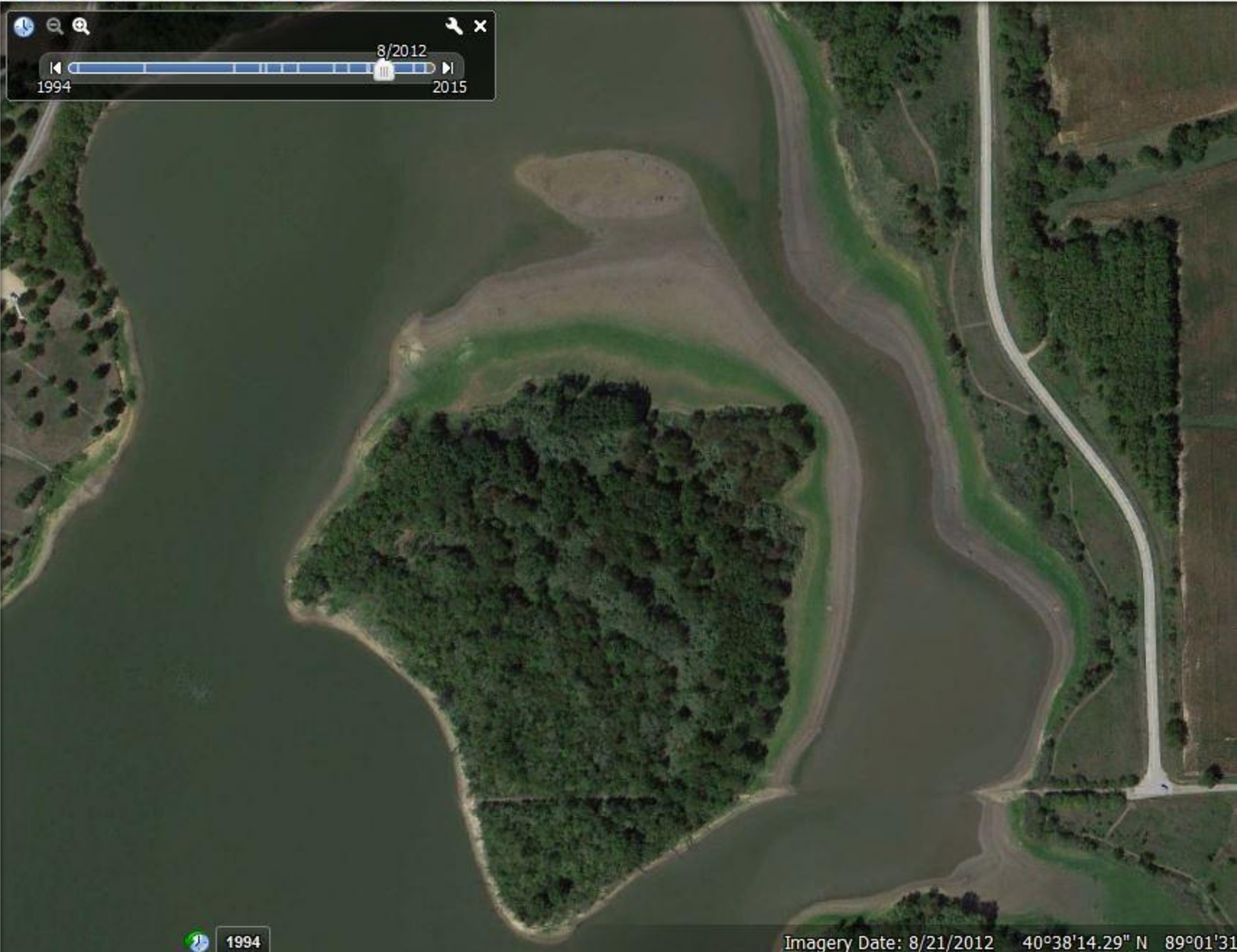


1/2016

Evergreen Lake

GOO

Imagery Date: 4/10/2015 40°37'58.89" N 89°04'18.37" W elev 785 ft



8/2012
1994 2015

A horizontal timeline slider with a play button icon on the left and a stop button icon on the right. The current date is 8/2012. The start date is 1994 and the end date is 2015. A vertical bar indicates the current position in the timeline.

1994

Imagery Date: 8/21/2012 40°38'14.29" N 89°01'31"

8/2012

Untitled Placemark

1994

Image Date: 8/21/2012 40828'21.67" N 80801'26.40" W elev

4/2015

history

Google Earth - New Placemark

Name:



Latitude:

Longitude:

Description

Style, Color

View

Altitude

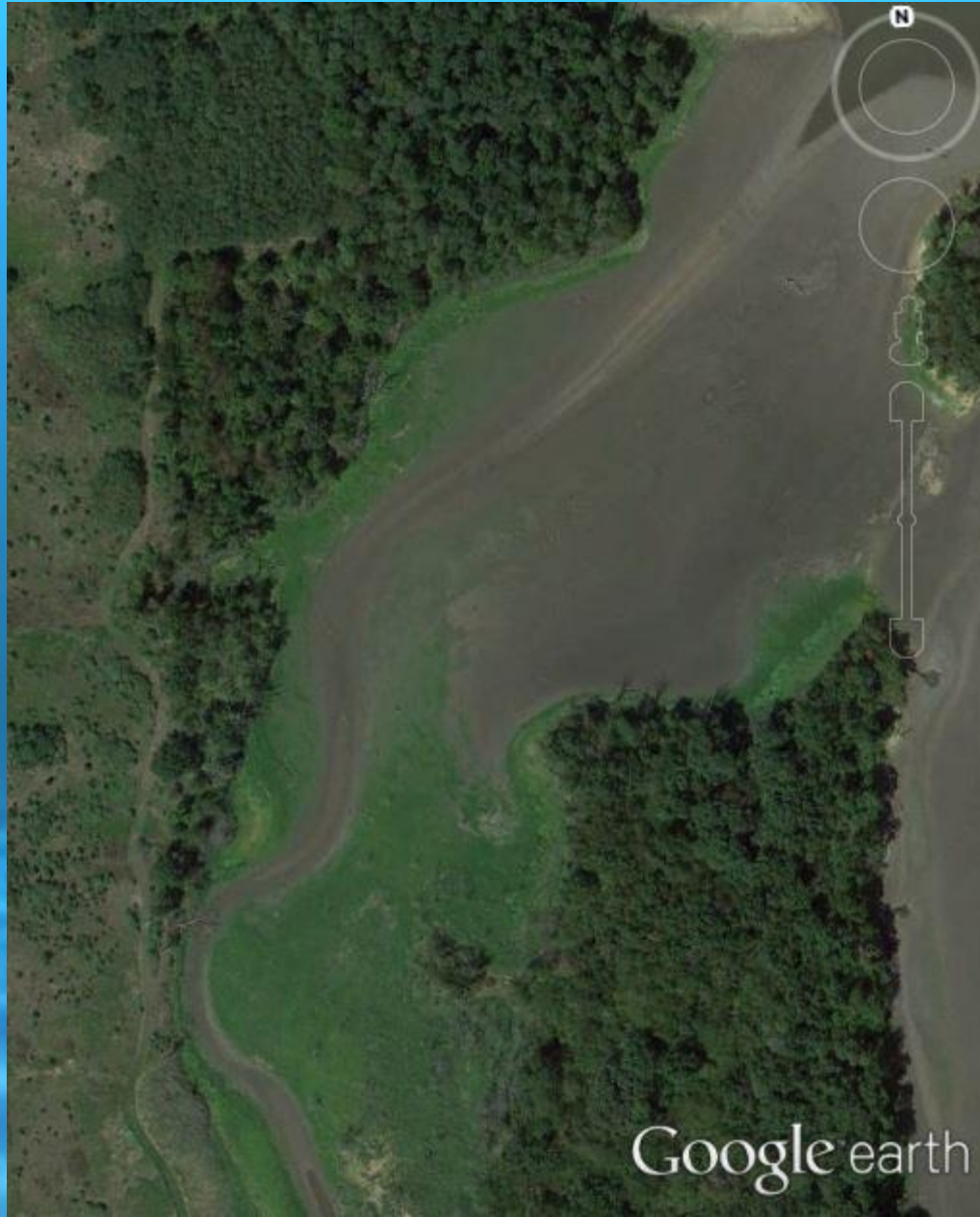
Add link...

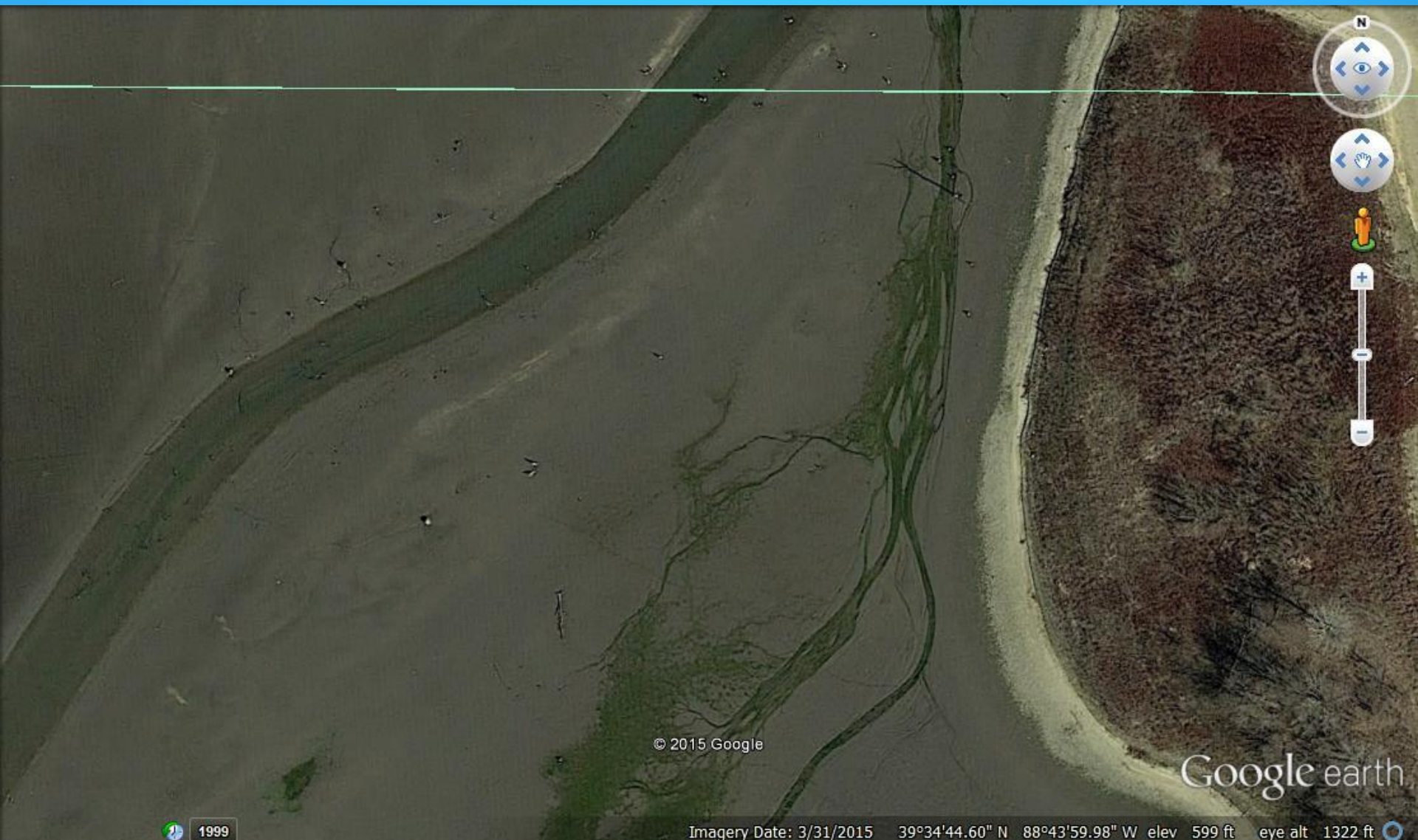
Add image...



Untitled Place

Lake





© 2015 Google

Google earth

1999

Imagery Date: 3/31/2015 39°34'44.60" N 88°43'59.98" W elev 599 ft eye alt 1322 ft

39°25'12.66"N 91°48'52.42"W

39°25'13.90"N 91°48'51.00"W

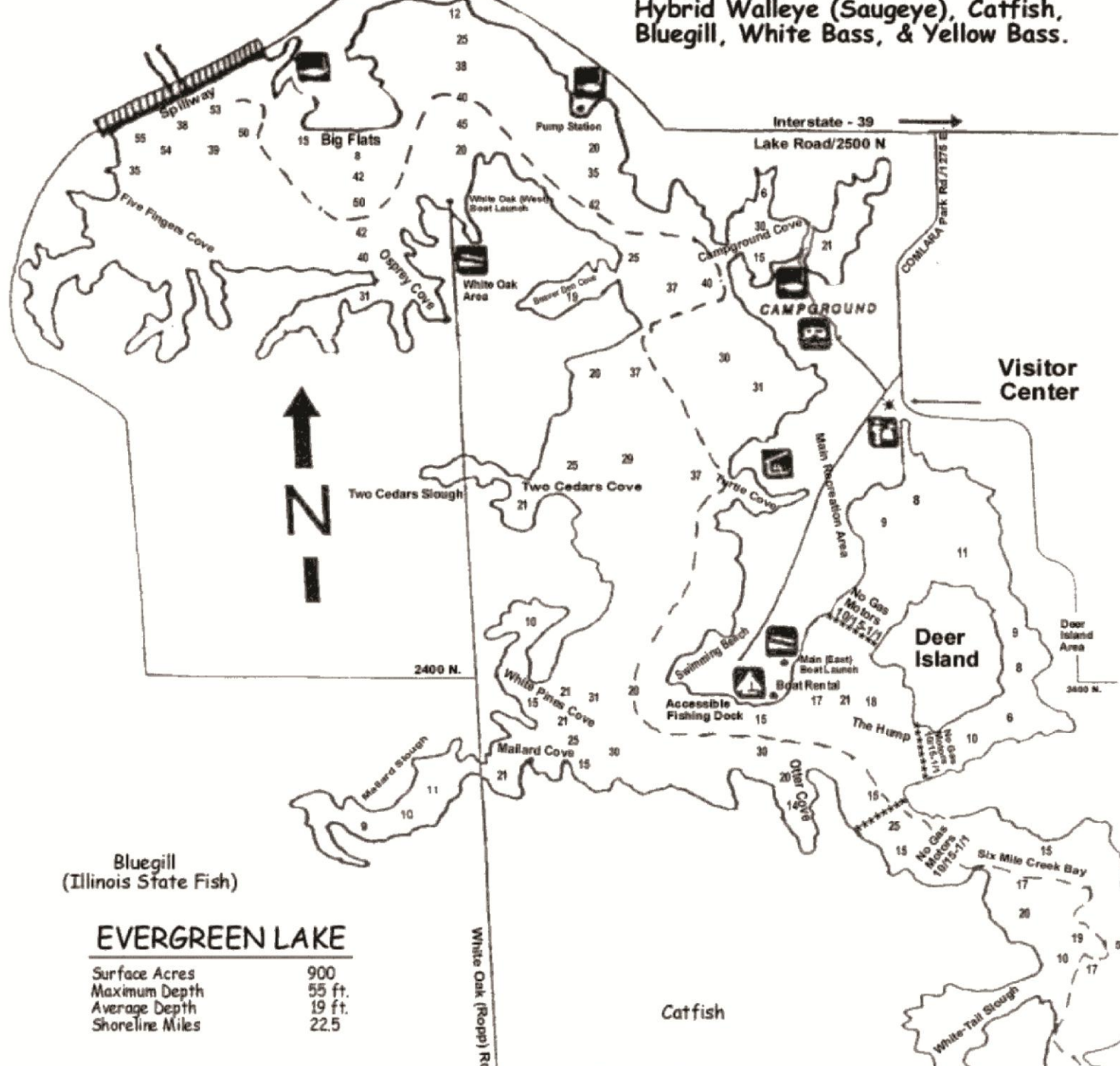
39°25'11.39"N

39°25'6.34"N 91°48'55.78"W

39°25'3.62"N 91°48'55.18"W

39°24'58.90"N 91°49'2.03"W

Hybrid Walleye (Saugeye), Catfish, Bluegill, White Bass, & Yellow Bass.



Bluegill
(Illinois State Fish)

EVERGREEN LAKE

Surface Acres	900
Maximum Depth	55 ft.
Average Depth	19 ft.
Shoreline Miles	22.5

Catfish

KEYS TO EVERGREEN

- LOADED WITH BAITFISH
- WATCH WIND DIRECTION TO PINPOINT BAITFISH AND THEN ATTACK THE HIGHWAYS AND SECONDARY CHANGES IN THAT AREA

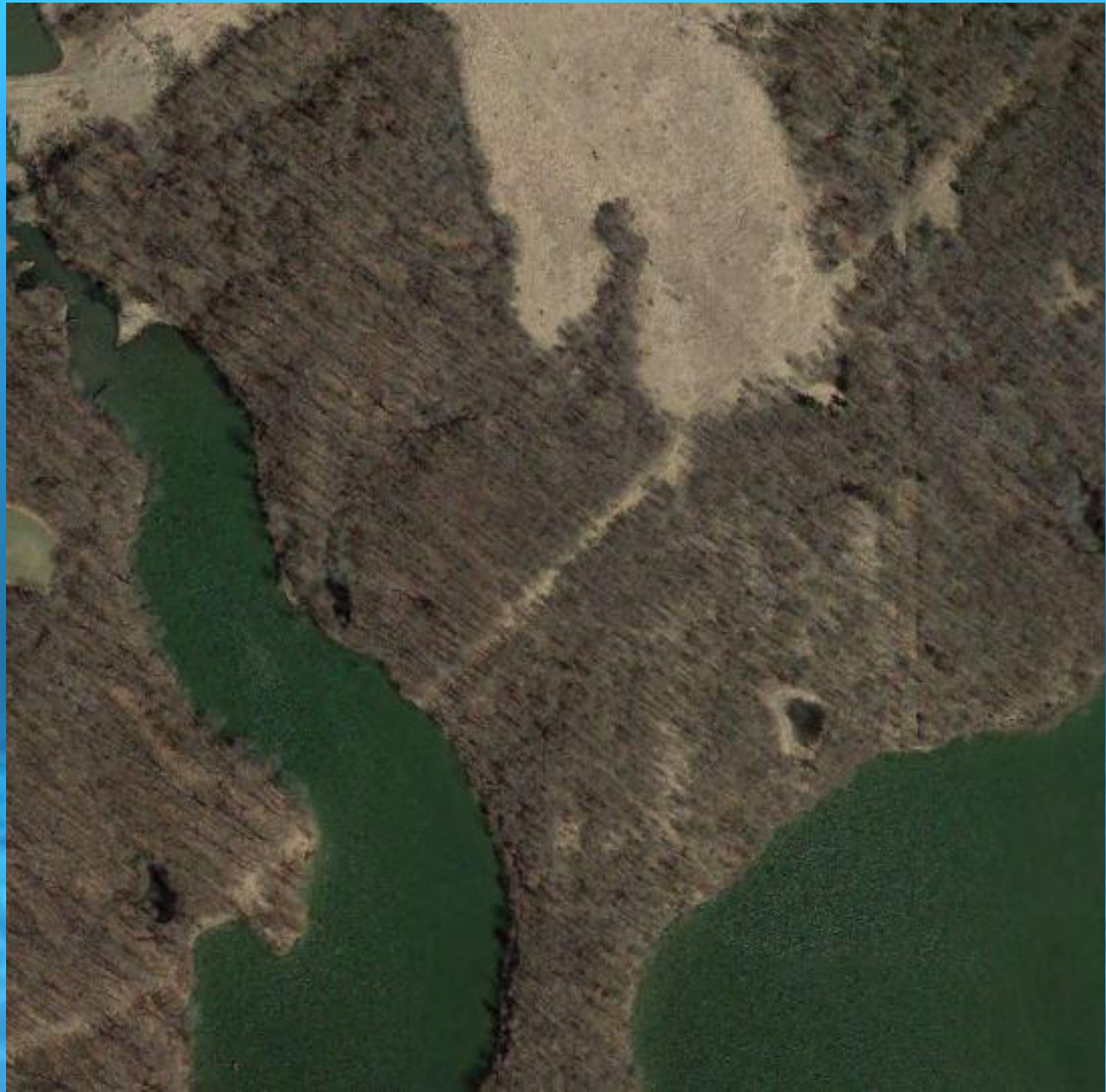


CLINTON CHARACTERISTICS

- RIVER CHANNELS
- CREEK CHANNELS
- DITCHES
- SMALL DRAINS
- ISLANDS
- FLATS
- ROAD BEDS
- OUR MAIN EMPHASIS IS FINDING AREAS NOT JUST STRUCTURE

USE GOOGLE EARTH TO BECOME FAMILIAR WITH THE LAKE





Roadbed →



Old submerged bridge

455kHz

KEYS TO CLINTON

- YOU CAN CATCH GOOD SIZE FISH YEAR ROUND
- LOADED WITH BAITFISH
- WINTER SPRING AND FALL FIND THE WATER TEMPS FROM 45-60.
- FIND WINDBLOWN AREAS
- SUMMER: FISH CAN BE SCATTERED ANYWHERE BUT BAIT IS ONCE AGAIN THE KEY. FLATS, WINDBLOWN BANKS

Springfield Crappie Club
Fall Crappie Tournament

1ST PLACE

Lake Clinton
September 18, 2010



GREG HUMPHREYS
ANGLER OF THE
SPRINGFIELD CRAPPIE CLUB



Google ea

STRETCH ATTRIBUTES

- WIND HAD BLOWN OUT OF THE WEST SOUTHWEST ALL WEEK.
- LOCATED FISH ON AN EAST BANK
- TOURNAMENT DAY FISH WERE GONE.
- WIND HAD SWITCHED TO THE SOUTH.
- WE MOVED RIGHT AROUND THE CORNER TO THE NORTH BANK AND THERE THEY WERE.
- SPIDER RIGGED AND JIGGED FROM 4-16'.

SHELBYVILLE CHARACTERISTICS

- RIVER CHANNELS
- CREEK CHANNELS
- DITCHES
- SMALL DRAINS
- ISLANDS
- FLATS
- ROAD BEDS
- OUR MAIN EMPHASIS IS FINDING AREAS NOT JUST STRUCTURE

CRAPPIE USA NATIONAL QUALIFIER

MAY 2015 SHELBYVILLE

4TH PLACE



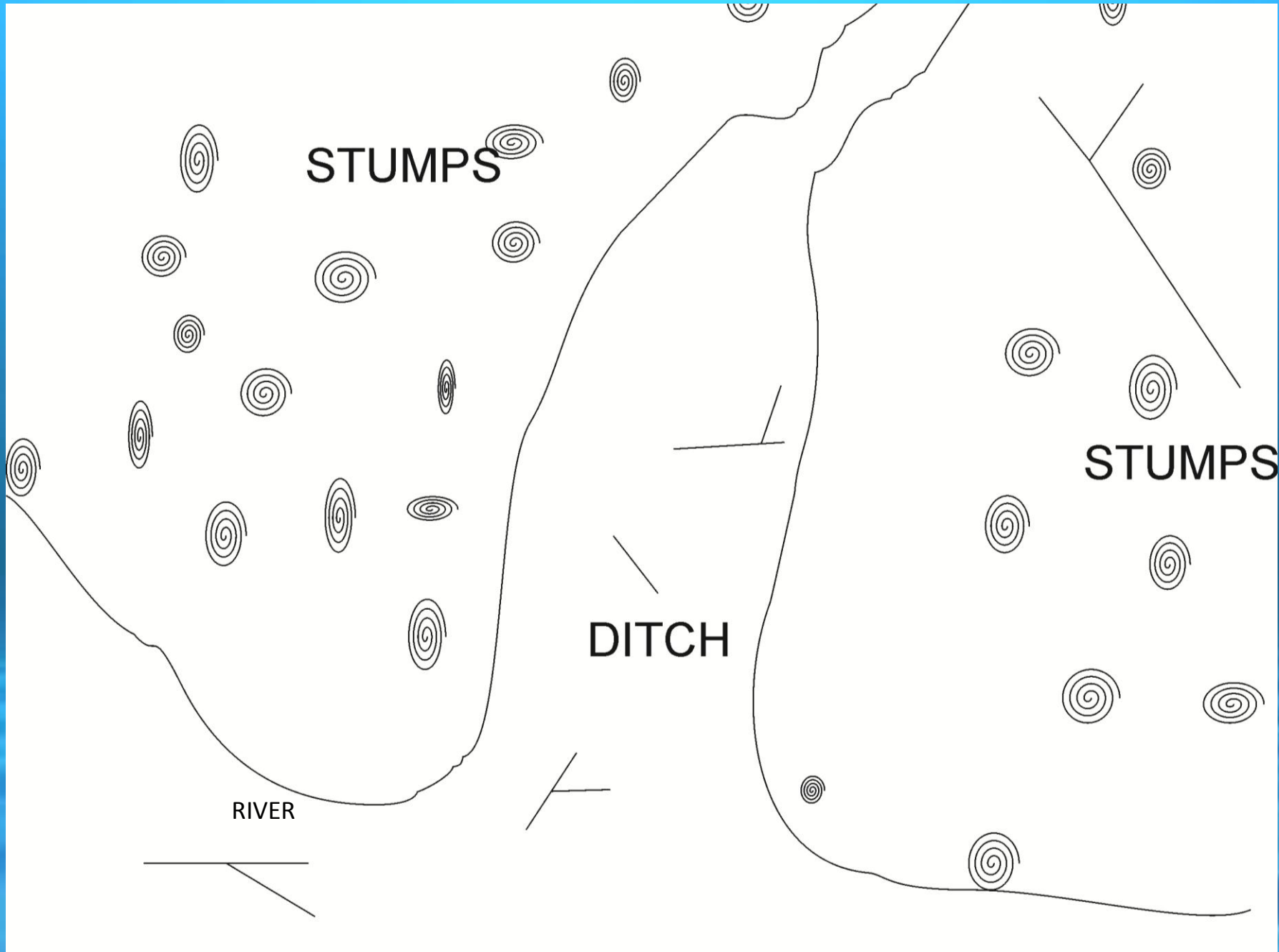
PREFISHING 6 HRS

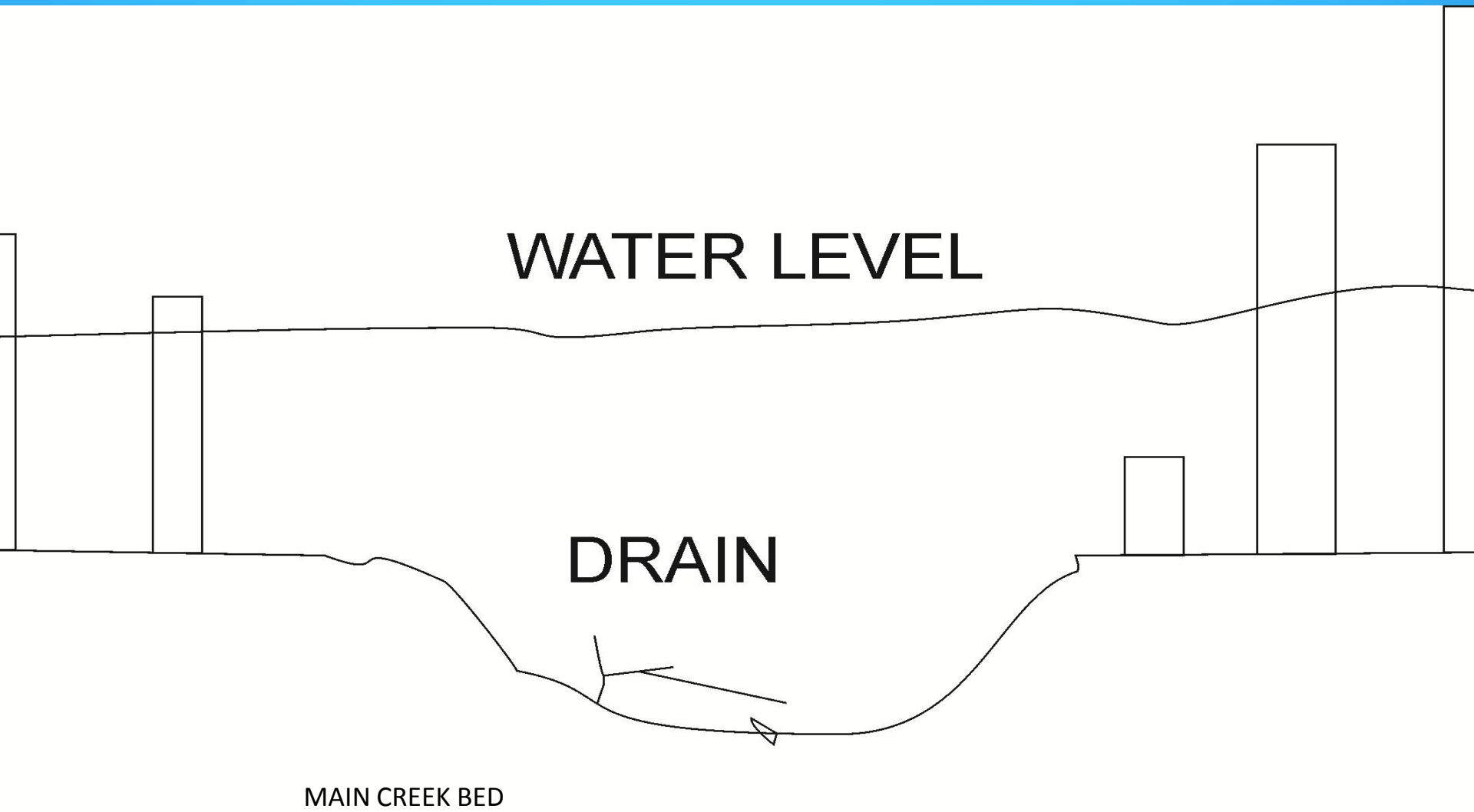
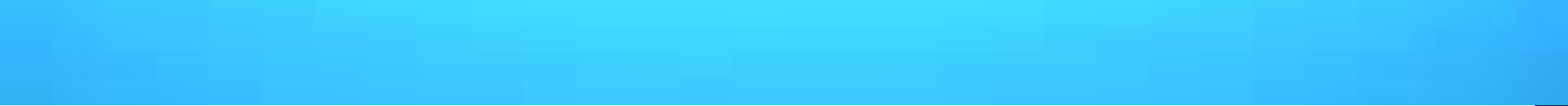
PRIMARY AREA WAS A 100 YD
STRETCH OF BANK AND THE
MOUTH TO FEEDER CREEK

HAD TO COMPLETELY
ABANDON PRIMARY PLAN

- WENT TO OTHER SIDE OF THE LAKE WHERE IT WAS WINDIER
- WATER WAS CLEANER
- MORE ESTABLISHED BAIT SCHOOLS
- FOUND A FEW 11"+ FISH



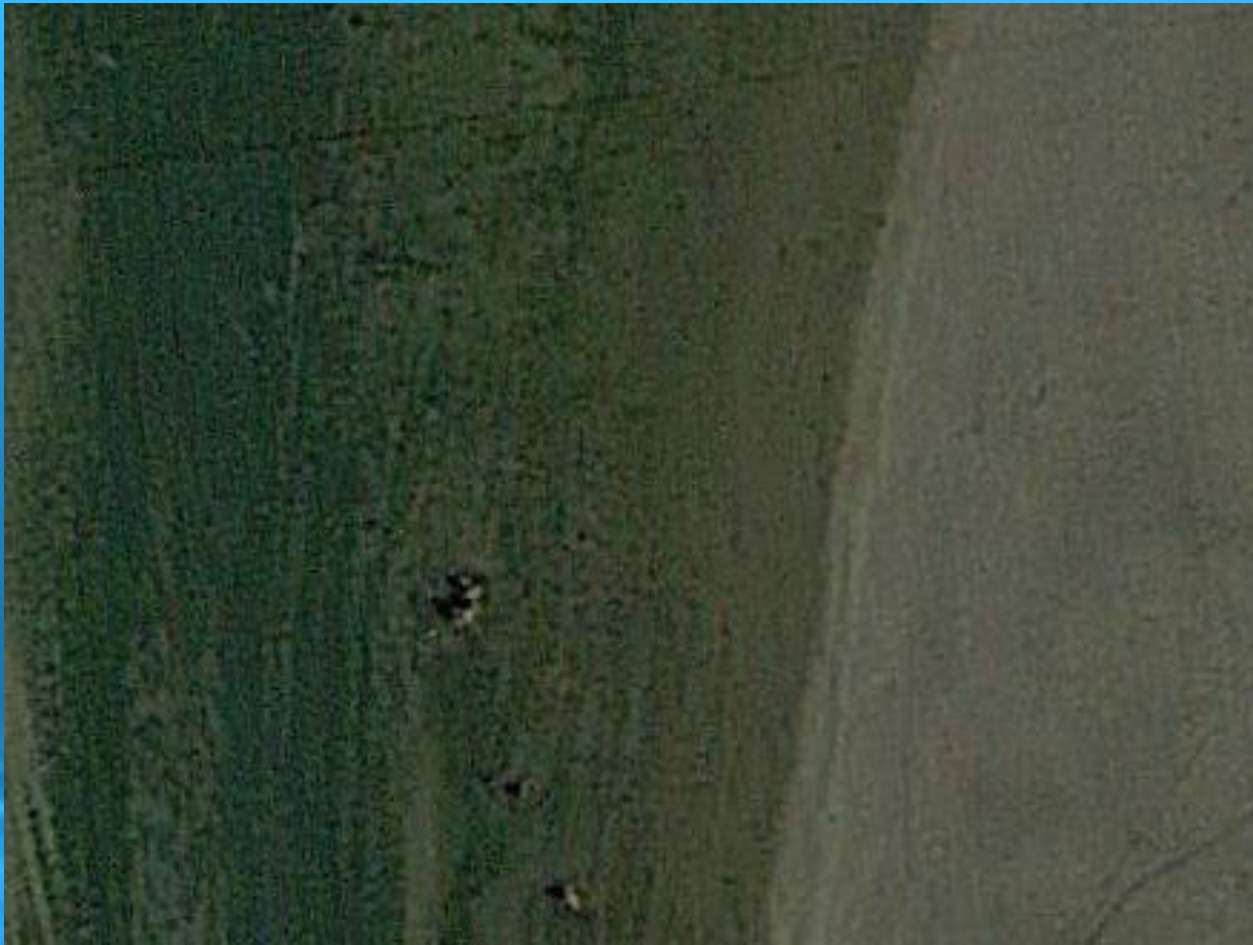




CROSS SECTION OF DRAIN

STUMPS (OUTLINE AREA)



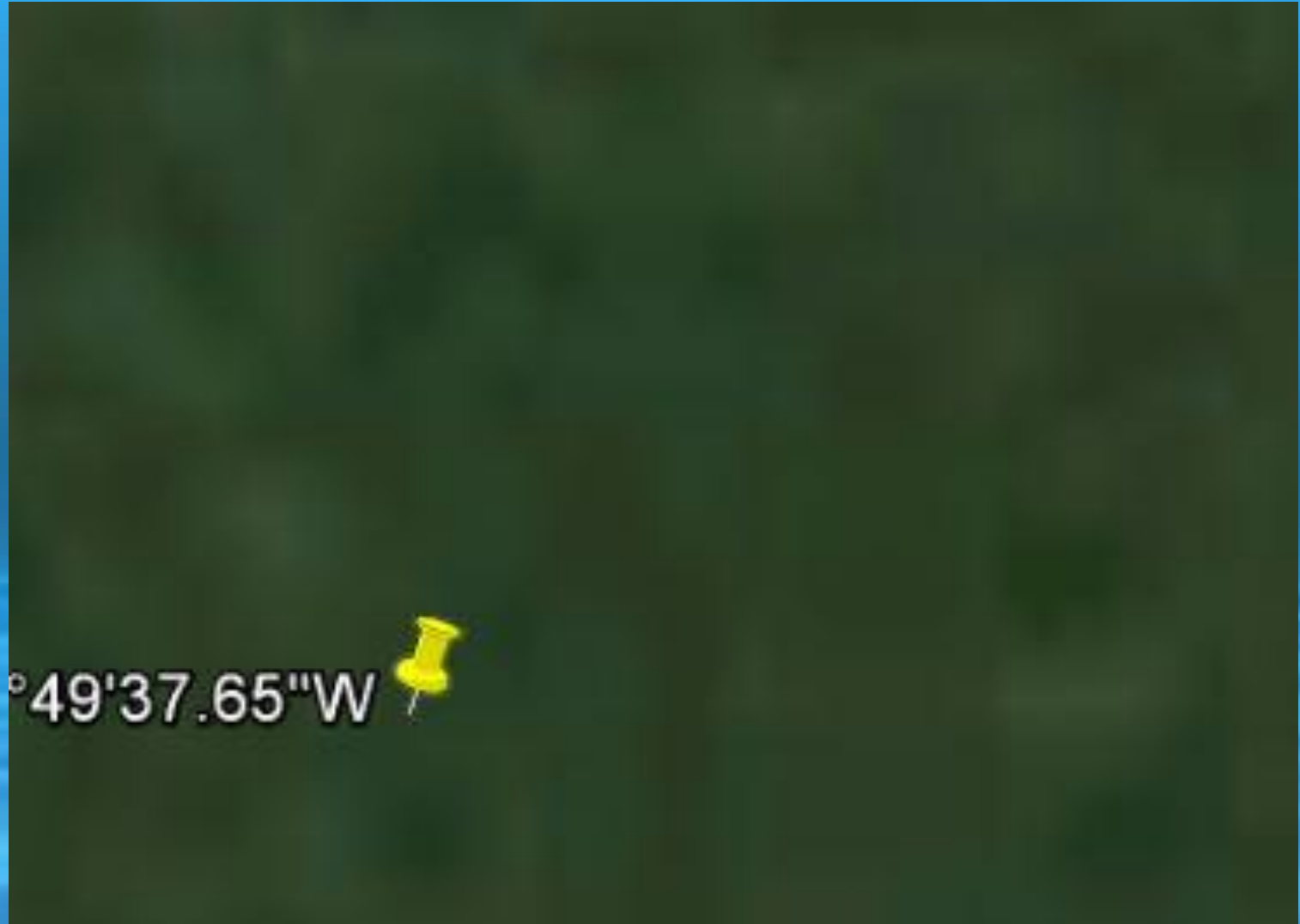


HEDGEROW ACROSS RIVER CHANNEL

BRUSHPILE WITH LOG AT LOW WATER



NORMAL POOL COMPLETELY SUBMERGED



RECAP

- VALUE OF GOOGLE EARTH AND MAPS
- USE THESE TOOLS TO PATTERN FISH
- KEEP A LOG BECAUSE RARELY DO THEY CHANGE (EXCEPTION SHELBYVILLE 2016)

JOIN LOCAL ORGANIZATIONS

- PRARIELAND
- SPRINGFIELD CRAPPIE CLUB
- HOI CRAPPIE CLUB
- CENTRAL ILLINOIS CRAPPIE CLUB

